

# ITL Validator Manager

Latest version can be downloaded from the link below.

[Validator Manager Download](#)

Validator manager is a utility which allows the user to reprogram any of ITL's validators. It can be installed from the link above; please note admin rights are required during installation. The validator must be in SSP for validator manager to detect the device.

## Minimum System Requirements:


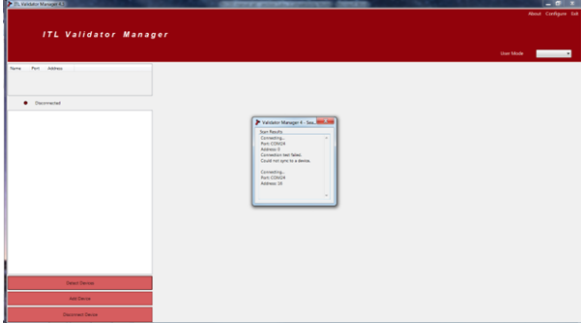
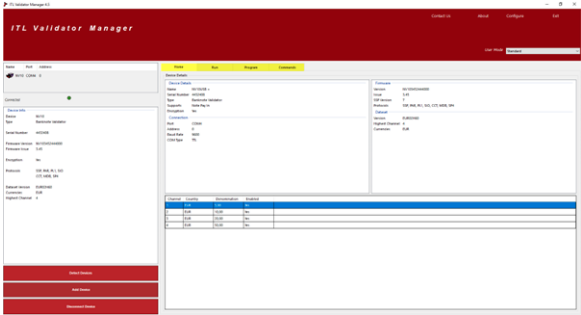
- Microsoft Windows 8.1 or later
- .NET Framework 4.5 or later
- 256MB ram
- 50MB hard disk free
- ITL COM Port Driver, see Installing ITL Drivers
- Connected ITL Validator with active COM port (serial or USB connection)

## Driver Requirement:

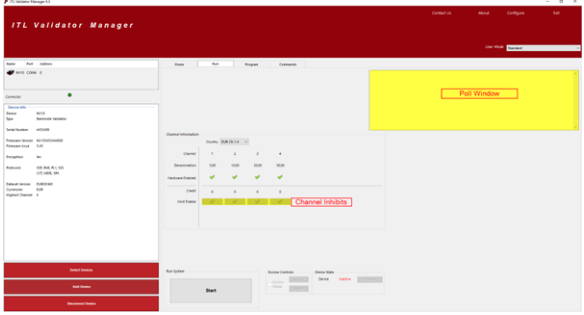
- Microsoft C++ 2015 Redist driver (x32 bit) or later; (must install)
- Microsoft C++ 2015 Redist driver (x64 bit) or later; (only install if computer is x64 bit)
- .NET Framework 4.5 or later; (already included on Windows 8 and later)
- ITL\_USB driver; (must install if using USB connection)

## Installation Instructions:

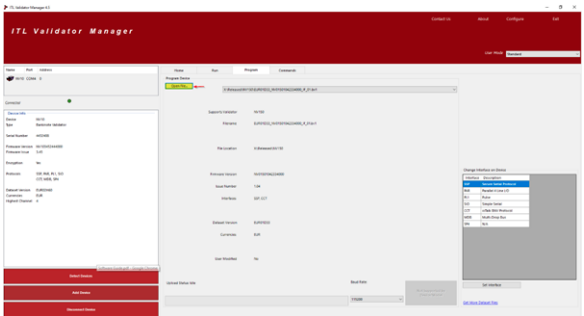
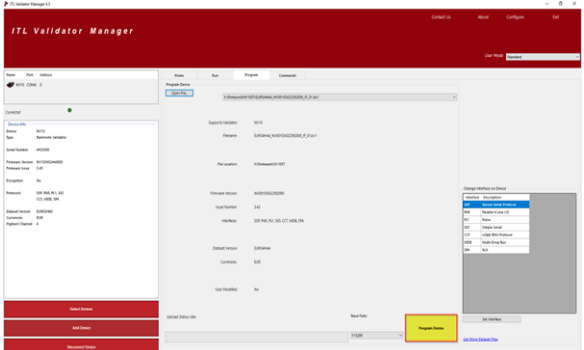
|   |  |
|---|--|
| 1 | Un-install all previous versions of Validator Manager installed on your computer. (Control Panel > Programs > Uninstall a program) |
| 2 | Update Windows. Make sure your Operating System has the latest updates   |

|   |  |
|---|--|
| 3 | Install all required drivers. Please refer to "READ_ME-BEFORE_INSTALL.txt" for further details, in order to know what version of drivers to install  |
| 4 | <p>Run the software executable and follow the on-screen instructions to install Validator Manager.</p> <div data-bbox="225 477 1425 674" style="border: 1px solid orange; padding: 10px; margin: 10px 0;"> <p> We have seen instances where one of the dll's (itdata1.dll) used in validator manager is flagged as a Trojan, this is a false positive and if this happens you will need to add a rule to your antivirus to allow the file to run</p> </div> |
| 5 | <p>Once opened the initial screen will look like this:</p>    |
| 6 | <p>Make sure that the Validator is powered up and the relevant cables are connected before going any further. When the program loads it will begin scanning through the active com ports on the machine until it gets an appropriate response. If an error is encountered, please ensure the device is generating a com port on device manager and the validator is in SSP.</p>  |
| 7 | <p>Once loaded the entire program options can be accessed from the menu bar at the top of the screen.</p>    |

## Running the Validator

|   |  |  |
|---|--|--|
| 1 | The unit can be run from within validator manager, simply click on the 'Run' tab and it will prompt you with the screen shown to the right. Here the channels are shown and each channel can be inhibited. The poll window will show information of the validator, like error messages or actions. |  |
| 2 | Click start and the unit will enable and allow you to feed notes.  |  |

## Programming the Validator

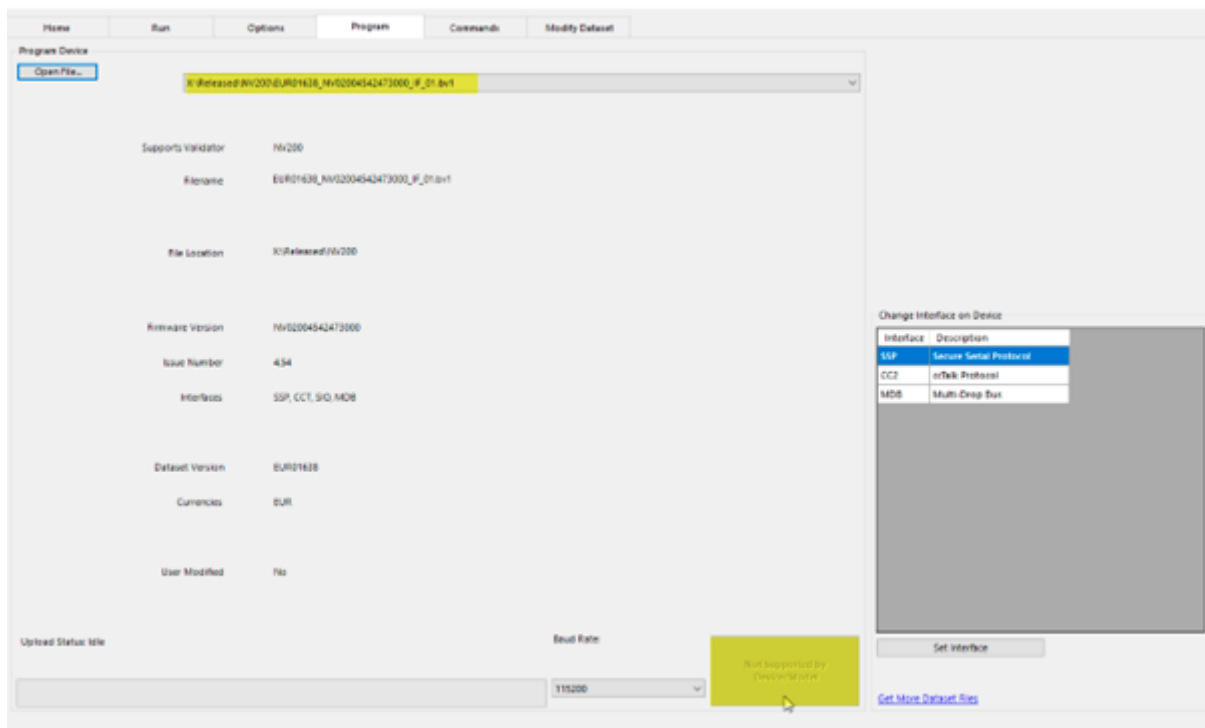
|   |  |  |
|---|--|--|
| 1 | By selecting the "Program" tab you can reprogram the validator. To begin the upload, click open file and browse to the file location (usually Downloads).  |  |
| 2 | Once the file has been selected its information will be populated and the Program device tab will become active.   |  |
| 3 | Click the program button and the device will begin to be programmed. Once the download starts the bezel will be flashing blue, and when completed the unit will restart and a pop up box will appear saying Device Programming Complete. |  |

## Problems Programming

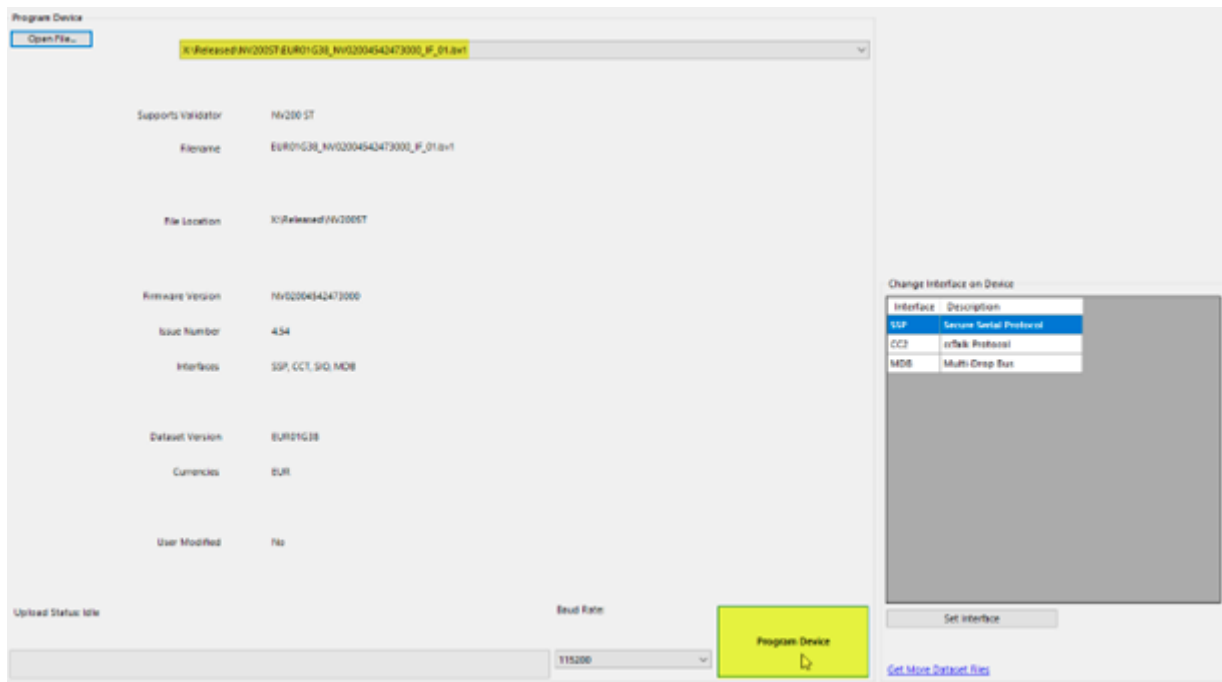
If the “Programming Device” button remains grey and shows “Not Supported by Model”, you have chosen an incompatible dataset. The most common issue is that you have a device with a ST processor and try to program a dataset for a device with an ASIC processor or vice versa. The picture underneath shows a connected NV200ST with a dataset for the NV200 with ASIC processor selected. In the second picture the button only enabled with the correct ST dataset selected. For more detailed information about the different datasets, please visit our FAQ area on our website, or directly use the link underneath.

<https://innovative-technology.com/support/faq-2/item/148-interpreting-dataset-file-names>

### Incorrect dataset selected:

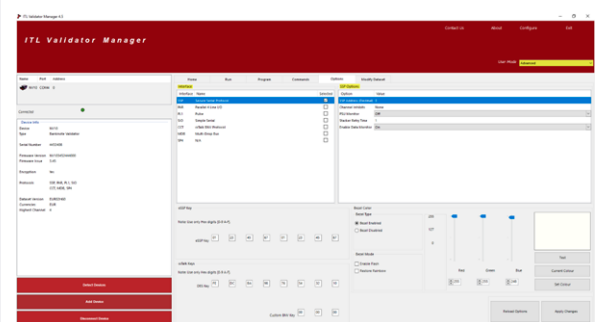


**Correct dataset selected:**



## Configuring your Validator

- 1 Validator and interface specific options are accessed from the 'Options' tab at the top of the screen. Please select the advanced user mode to activate the tab.



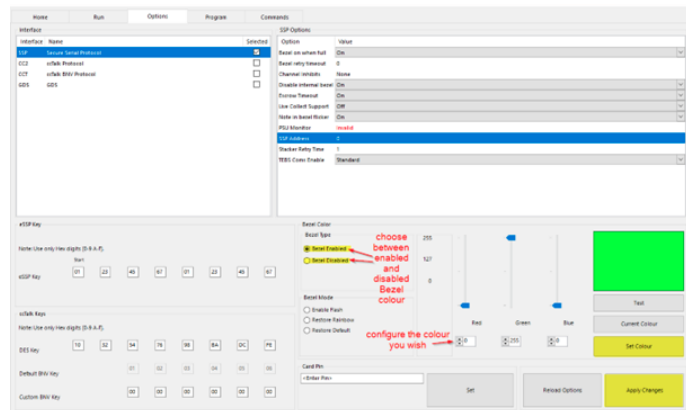
- 2 Device Info to the left of the screen. Specific interface options are available in the main part of the display, in the example above CCT is selected, from here DES encryption can be enabled/disabled, the CCT address can be set, channel inhibits can be set.



Hovering over options provides a description of the function.

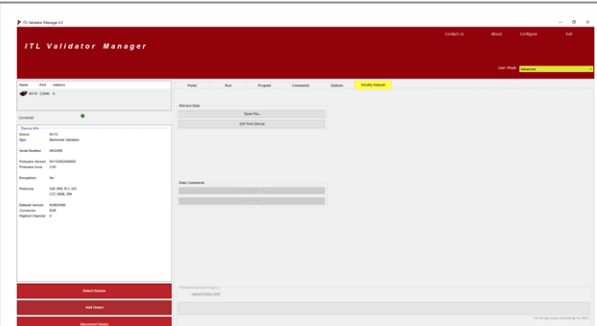
## Change the Bezel Colour

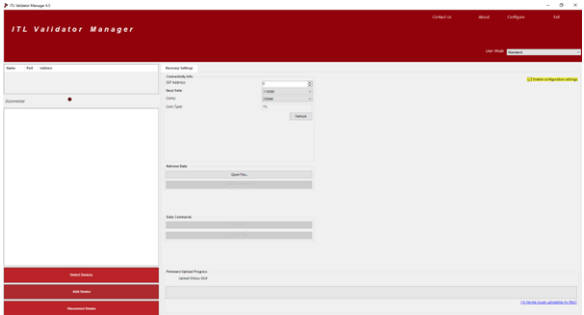
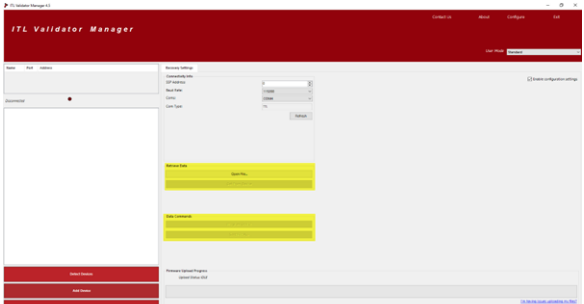
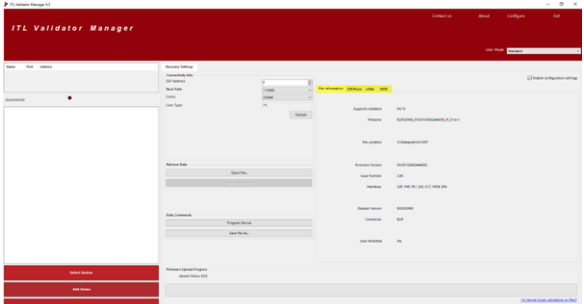
|   |   |
|---|---|
| 1 | Select the “Advanced” user mode                       |
| 2 | Open the tab “Options”                                |
| 3 | Choose the enabled or disabled Bezel                  |
| 4 | Configure the colour you would like the bezel to have |
| 5 | Click on “Set Colour”                                 |
| 6 | Click on “Apply Changes”                              |



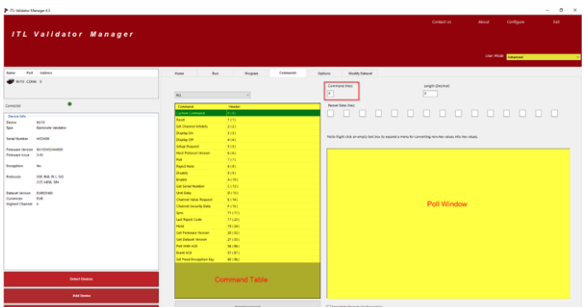
## Dataset Modification

|   |  |
|---|--|
| 1 | It is possible to modify the dataset if you have specific needs, such as number of pulses for each note. These options can be configured in the dataset tab. Please select the “Advanced” user mode. |
|---|--|



|   |  |   |
|---|--|---|
| 2 | The second possibility to modify a dataset is that you check the box “Enable Configuration Settings” on the first screen (before you connect the validator).   |   |
| 3 | After one of these two methods has been chosen, click on open file and choose a dataset.   |   |
| 4 | The dataset can either be one you have downloaded or one which has been pulled from the validator. Once a dataset is selected, the relevant options will be populated and can be set by navigating the tabs shown below. |  |
| 5 | Once the dataset modification has been completed it can either be uploaded to the device or saved locally for use later.   |   |

## Sending Individual SSP Commands

|   |  |  |
|---|--|--|
| 1 | It is also possible to send individual SSP commands if you are attempting to gather specific validator information. With the user mode set to Advanced, a list of common commands are displayed. |  |
|---|--|--|

**2**

The left-hand column is the command table (yellow highlighted and lettered). The right-hand side is the dedicated poll window (yellow highlighted and lettered). When commands are sent and received, SSP packets are displayed here. At the top is a text box allowing you to send specific hex commands.